

7300

HAZARD

WESTMINSTER, CA



FOR LEASE

±70,810 SQUARE FEET

BUILDING FEATURES:

- Approximately 6,000 SF of office space
- 7 dock high loading positions
- 2 grade level loading doors
- 24' average warehouse clearance (some portions are 22')
- 0.45 gpm/3,000 SF
- 3,000 Amps 277/480 volt electrical service
- +180' truck court
- Direct access to 405 freeway
- Large yard/trailer storage

REGIONAL MAP



FOR MORE INFORMATION, PLEASE CONTACT:

RICK ELLISON

+1 949 930 9231

rick.ellison@cushwake.com

CA License No. 01196428

RANDY ELLISON

+1 949 930 4371

randy.ellison@cushwake.com

CA License No. 01469586

KYLE MCGILLEN

+1 949 930 9229

kyle.mcgillen@cushwake.com

CA License No. 01959388

7300 HAZARD

WESTMINSTER, CA

SITE PLAN

FOR MORE INFORMATION, PLEASE CONTACT:

RICK ELLISON

+1 949 930 9231

rick.ellison@cushwake.com

CA License No. 01196428

RANDY ELLISON

+1 949 930 4371

randy.ellison@cushwake.com

CA License No. 01469586

KYLE MCGILLEN

+1 949 930 9229

kyle.mcgillen@cushwake.com

CA License No. 01959388

CUSHMAN & WAKEFIELD - IRVINE

18111 Von Karman Ave.,

Suite 1000

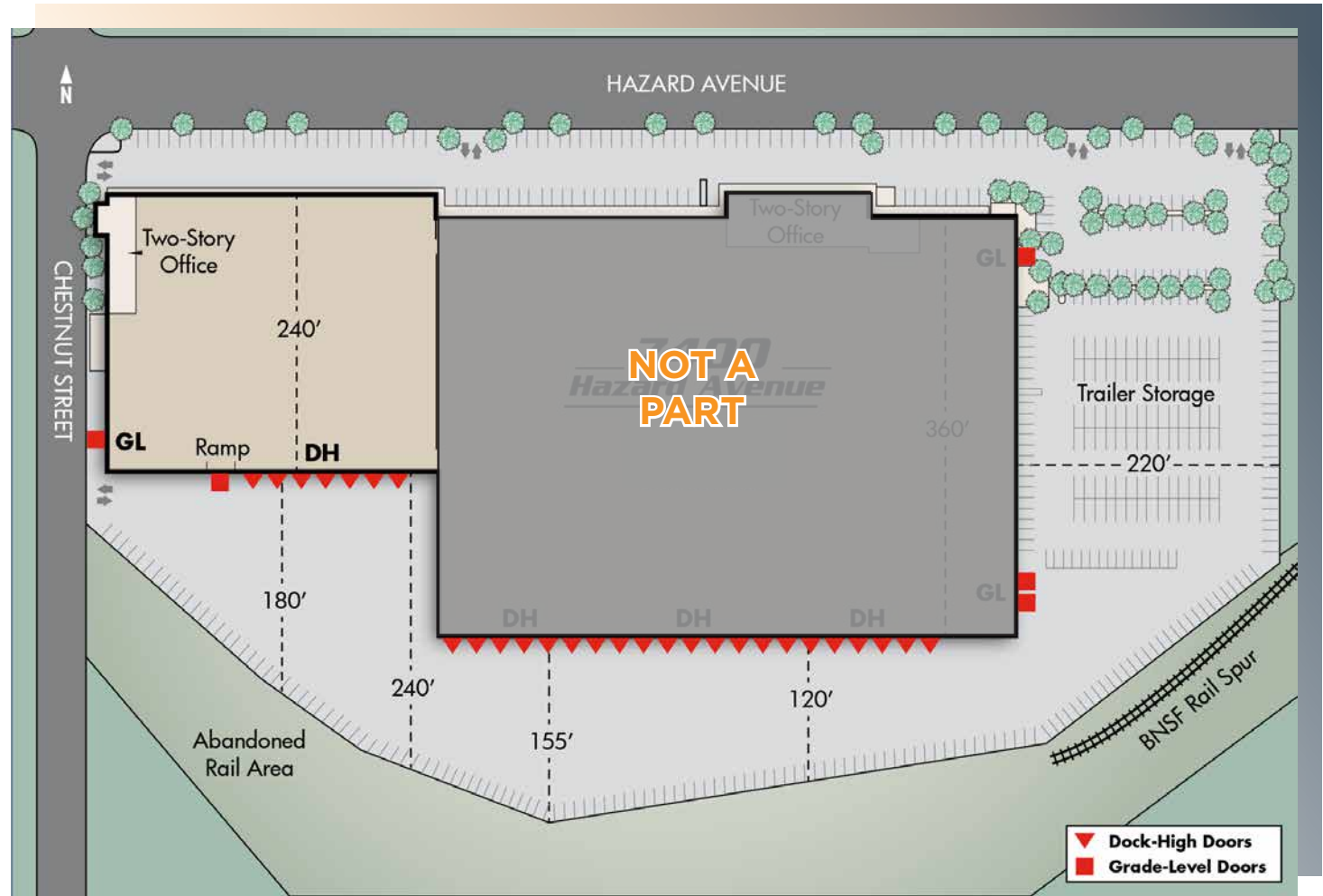
Irvine, CA 92612

cushmanwakefield.com

Owned by:



CLARION PARTNERS



Cushman & Wakefield Copyright 2018. No warranty or representation, express or implied, is made to the accuracy or completeness of the information contained herein, and same is submitted subject to errors, omissions, change of price, rental or other conditions, withdrawal without notice, and to any special listing conditions imposed by the property owner(s). As applicable, we make no representation as to the condition of the property (or properties) in question. 7300_Hazard_Brochure_70K SF_v01_LZ